



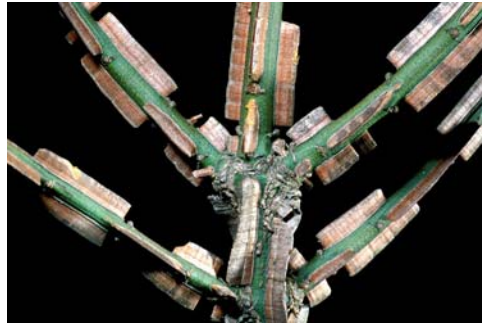
Winged Euonymus or Burning Bush (*Euonymus alatus*)

Native range: northeastern Asia

Description: *Euonymus alatus* is an ornamental deciduous shrub with bright red fall foliage. The bark is gray-brown and the stems have prominent, corky

wings running along both sides. In some cultivars, wings can appear as mere ridges. The leaves are opposite, elliptic, and measure 1-3 inches long and ½ to 1.5 inches wide with fine, sharp serrations on the edge. The flowers are small, yellowish green in color. The smooth, purplish fruit are ½ inch long and are present in September through October. Each fruit contains approximately four red to orange seeds.

Ecological Threat: Since it is a rather slow growing shrub it behaves well in urban areas. But *E. alatus* planted near woodlands, mature second-growth forests, and pastures can be problematic. It has been observed escaping from cultivation in the northeast and Midwest. It threatens woodland areas, fields, and coastal scrubland because it forms dense thickets that crowd out native shrubs and wildflowers. The shrub also grows in full shade allowing it to infiltrate deep into wooded areas.



Id tip: Corky "wings" on stem.

Methods of Reproduction and Dispersal:

E. alatus produces many seeds each season and has a high rate of germination. Birds relish eating the fruit, and seeds passing through their digestive tract are viable. Seeds dispersed this way germinate easily and spread the infestation to other areas.

Manual and Mechanical Management Methods:

Control of this plant is difficult because it produces a tremendous amount of seed. Seedlings up to 2 feet tall can be easily hand-pulled, especially when the soil is moist. Larger plants can be cut back and their root systems can dug out with a spading fork or pulled with a weed wrench. The stump must be ground out or re-growth will persist. Continual cuttings of regrowth will ultimately exhaust the root energy and kill the plant.

Suggested Alternative Plants: Spicebush (*Lindera benzoin*), Strawberry bush (*Euonymus americanus*), maple-leaf viburnum (*Viburnum acerifolium*), wild hydrangea (*Hydrangea arborescens*), highbush blueberry (*Vaccinium corymbosum*), red chokeberry (especially the cultivar *Aronia arbutifolia* 'Brilliantissima') large fothergilla (*Fothergilla major*), cranberry viburnum (*Viburnum trilobum*) or the non-invasive exotic Korean spice viburnum (*Viburnum carlesii*).